



the Company Profile



ALUMINIUM WINDOWS & DOORS, ALUMINIUM CLADDING SYSTEMS
FACADE /STRUCTURAL GLAZING SYSTEM , SPIDER SYSTEM
FRAME LESS SYSTEM & GLAZING WORKS, GLAZING WORKS, STAINLESS STEEL
WORKS, SKYLIGHT, ALUMINIUM KITCHEN CUPBOARDS & CABINETS
UPVC WINDOWS & DOORS, MS STEEL WORKS



ABOUT US

"True Line International LLC" with commercial registration number: 1344938. We are one of the leading SME registered Company in the Sultanate of Oman having the activities of IT & ICT Solutions, Fabrication of Metals and Medical Goods Trading.

We have a Professional team with track records of providing Good Quality Products and Services with focus on client's Satisfaction and efficiency. It is our goal to modernize the industry in Sultanate of Oman, through the use of advanced technologies and Innovative Ideas and products. We comply with high Standard specifications in the terms of Technology, Products and Designs as well as being flexible to provide to clients who prefer standard type system.

KEY BENEFITS

- Efficiently utilize resources
- Deploy resources optimally
- Reduce infrastructure and operating costs
- Improve revenue realization
- Enhance Security & Safety Measures

Why Choose Us

True Line International LLC is a group of young, dynamic highly skilled professionals who personally work with their clients to make sure that quality, reliability and safety are given utmost importance while installing systems and also make sure that installation has been productively implemented with efficient with and for years to come. True Line International LLC assures ultimate satisfaction to you in terms of cost effectiveness IT solutions, services per excellence, safety efficiency.

Our Vision

We accomplish this vision by keeping pace with ever-changing technological advancements and by being the first to deploy those technologies across sultanate of Oman.

Our Mission

Our mission is to provide the best IT services and security solutions to our clients. Ultimately the safety and security of the client's staff, premises, assets and the general public is our most elevated need.

ALUMINIUM WINDOWS & DOORS





ALUMINIUM WINDOWS & DOORS

Aluminium Window And Door Has Better Sealing And Anti-pressure Strength, Material Type And Diversified Surface Treatment Give Our Customers More Choices. Our Aluminium Window And Door System Include.

Hinged and Sliding Windows & Doors

Pivot Windows

Composite Profile Windows

Lift & Slide Windows

Automatic Doors (Sliding, Hinged, Telescopic)

We can provide you with customized options that suit your requirement. We offer a wide range of window types to meet your aesthetic and practical needs. Our windows are perfect for commercial or residential environments.

ALUMINIUM CLADDING SYSTEMS





ALUMINIUM CLADDING SYSTEMS

We provide a wide range of high quality panel cladding tray that is widely used for cladding the external part of buildings, false ceilings, partitions etc. Aluminium cladding is durable, hygienic, lightweight, low maintenance and recyclable. ACP is a popular choice in the industry, due to its flexibility and ease of fabrication. It is impervious to termites and other insects, and because it allows the wall to breathe.

Aluminium composite panel cladding

Solid Aluminium Sheet

Patterned Aluminium Sheets

Decorative Canopies

Aluminium Screens

FACADE / STRUCTURAL GLAZING SYSTEM



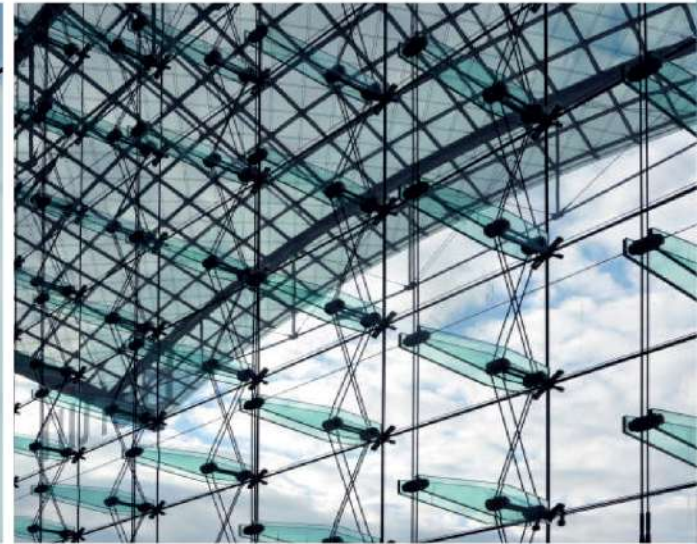


FACADE /STRUCTURAL GLAZING SYSTEM

A curtain wall system is an outer covering of a building in which the outer walls are non-structural, utilized to keep the weather out and the occupants in. Since the curtain wall is non-structural, it can be made of lightweight materials, thereby reducing construction costs. When glass is used as the curtain wall, an advantage is that natural light can penetrate deeper within the building. The curtain wall façade does not carry any structural load from the building other than its own dead load weight. The wall transfers lateral wind loads that are incident upon it to the main building structure through connections at floors or columns of the building. A curtain wall is designed to resist air and water infiltration, absorb sway induced by wind and seismic forces acting on the building, withstand wind loads, and support its own dead load weight forces.

- Aluminium composite panel cladding
- Solid Aluminium Sheet
- Patterned Aluminium Sheets
- Decorative Canopies
- Aluminium Screens

SPIDER SYSTEM





SPIDER SYSTEM

Structural Glass & Spider Glazing curtain walls provide maximum daylight for building interiors, as well as the possibility of placing large transparent glass surfaces as building envelopes. Due to its visual attractiveness such architectural building envelopes are commonly used on commercial buildings to create premium building skins. A wide variety of applications are available, including curtain walls, canopies and atriums, allowing maximum transparency, brightness optimization and unique design.

- Spider System - Conventional
- Spider System - Tension Cable
- Spider System - Tension Wire

FRAME LESS SYSTEM &

GLAZING WORKS





FRAME LESS SYSTEM & GLAZING WORKS

Bathroom glass/Shower Partitions

Made of toughened glass to remain robust at all times, our safety glass shower screens are given an anticorrosive and hydrophobic coating to increase their lifespan and reduce the amount of maintenance needed. The perfect solution for any bathroom.

Frame less Glass Partitions

Frameless partition solutions combine functionality and aesthetics, letting natural light flood into open spaces but limiting noise transmission. A glass partition is ideal for offices, shops etc. making noisy open-plan spaces a thing of the past. Using our Clip-In system it provides invisible bonding, the glass optimizes distribution of natural light to give a stunning aesthetic appearance, reducing the need for artificial light inside, and helping to cut energy consumption.

Glass Handrails/Balustrades

Safety glass balustrades provide protection as well as style and modernity, thanks to the selection of toughened and laminated glass types on offer. Suitable for both interiors and exterior applications, our safety glass balustrades are ideal for all types of installation from private balconies to public places.

GLAZING WORKS





GLAZING WORKS

We are engaged in providing a wide range of glazing solutions. These are rendered by experienced professionals, who utilize latest technological devices and the finest quality of raw material, while executing projects. The offered services are highly demanded in the market for reliability and timely execution. Widely used in buildings, shop fronts, large roof, stadiums and other such places, our work is widely appreciated by the clients for displacement of corresponding beam, resistance to wind pressure structure, safety from air and water infiltration.

- Stain Glasses
- Sandblasting Glasses
- Toughened Glasses
- Design Glasses
- Laminated Glasses
- Etched Glasses
- Double Glazing

STAINLESS STEEL WORKS





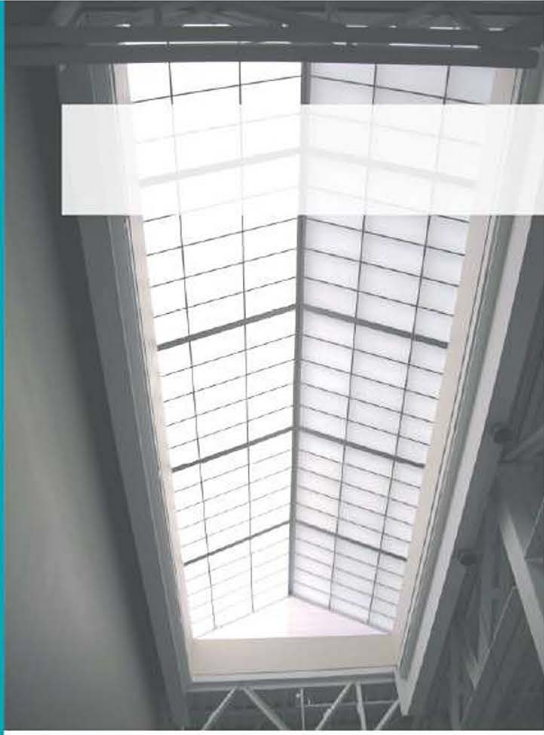
STAINLESS STEEL WORKS

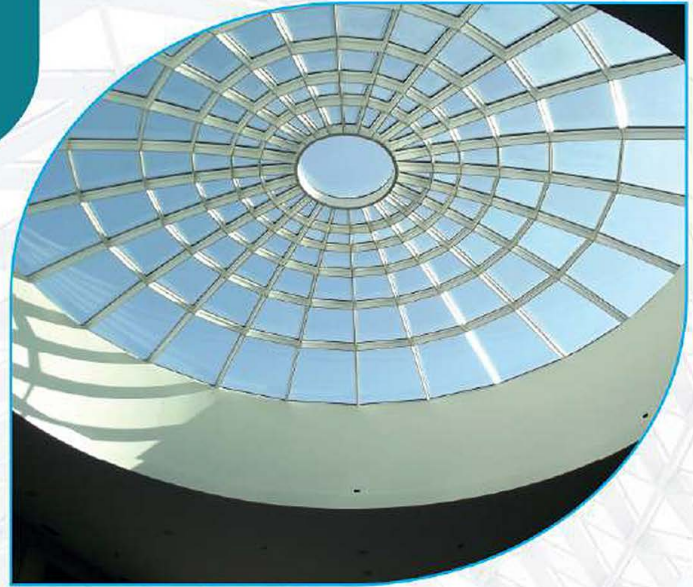
We specialized in commercial and residential Stainless Steel applications. We work closely with Architects, Designers, Contractors, Railing systems makers and Home owners to produce high quality, unique products which enhance the lifestyle of our clients.

We strive to achieve and exceed our client's perception of reliability, quality, and customer service. We service complex and simple stainless steel projects efficiently and with the highest attention to detail at all times.

- Stainless Steel Handrail
- Stainless Steel cladding
- Stainless steel partitions

SKYLIGHT





SKYLIGHT

A skylight is a light-transmitting structure that forms all or part of the roof space of a building for day lighting purposes. We are dedicated to providing our customers with energy efficient skylights in a wide variety of colors and styles. Our commercial and home day lighting solutions help you save on energy costs for your home or business, while brightening the environment with plenty of natural light. In addition to providing environmental benefits, our products are designed to improve the aesthetics of any building and add a stunning design element to your home. Our home skylights are available in many styles, which allow our customers to easily find the right skylight for a flat or pitched roof

PVC thermoform

ALUMINIUM KITCHEN CUPBOARDS & CABINETS



Solid wood



Melamine





ALUMINIUM CUPBOARDS & CABINETS

We Set up Aluminium Kitchen cabinet, Aluminium Kitchen furniture in fabulous design with functional simplicity. Aluminium Modular wardrobes which are luxurious, efficient and space saving, our modular Aluminium wardrobe systems are tailored to fit every need. Our expertise represents a variety of fields encompassing design, project delivery, implementation, and reporting.

- Economical And Long Lasting
- Ease Of Care And Maintenance
- Versatile Colors And Designs
- Water Proof
- Rust Resistant
- Ease Of Remodeling
- Re-usable For Reinstallation

UPVC WINDOWS & DOORS





UPVC WINDOWS & DOORS

Why choose UPVC windows and door, Durable products offer high-end insulation upvc windows and door. Multi-capacity, large section profile, multi-sealing and the double glazed make the best and sound insulation performance to be the best. Our UPVC windows systems include: Casement window and door; Sliding window and door; tilt-turn window and door; fixed and artistic window and door etc, we can provide you with customized options that suit your requirement.

Safe and Secure

Energy Cost Saving

External Noise Reduction

No Maintenance Required

Tough. Sturdy. Durable.

Double Glazing

MILD STEEL WORKS

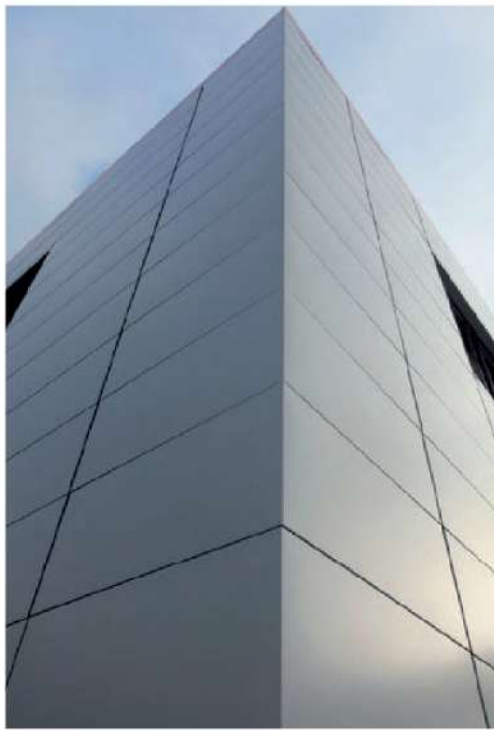




MS STEEL WORKS

We provide high quality metal fabrication, working across various industries: hospitality, retail, interior, fit-out and residential. We have vast experience in mild steel fabrication ranging from: Staircases, Fire Escapes, Shop Fit out, Mezzanine Flooring etc. We are versatile and easily adaptable to handle any size project. Our services includes,

- STRECHURAL STEEL FABRICATION
- M S GATES
- M S HANDRAILS
- MS TANKS
- GATE AUTO MATION
- ALL TYPE OF MS STEEL WORKS



OUR POLICIES



TRUE LINE INTERNATIONAL LLC is committed to achieve a sustained profitable growth by developing and delivering quality products in the field of architectural aluminum and glazing & Stainless Steel and MS works that consistently satisfy the needs and experience of our clients. We also ensure that our products are fully compliant to local and relevant international statutory and regulatory requirements

We are committed to the continual improvement for the effectiveness of our quality management systems by monitoring and measuring through review of our quality objectives. We are committed to achieve the utmost customer satisfaction and to build a constructive relationship with our clients and suppliers and at the same time enhance the competency of our employees through hard work and determination atmosphere conducive to providing the best results.

OUR POLICIES

OUR POLICIES

AFTER SALES SERVICE

Following the completion of a project we believe that the client is entitled to expect first class services after sales for the life time of the building. Whether the client requires work in support of the company's warranties or planned maintenance under an ongoing regime or an emergency call out service. Our systems are ready and prepared to support the needs with an experienced and well-trained workforce. Our products have undergone vigorous testing in the Sultanate complying with all international standards and wherein a certificate of compliance is given. These prove that all tests guarantee all our products against any water leakage, wind load etc.

FACTORY VISION

To be a major player in building & materials manufacturing constructions with industry unique characterized by quality products and services. excellence in practice and values that nurture human potential.

Quality

- Excellent
- Good
- Average
- Poor

To achieve our objectives of ensuring that our customer needs and expectations are attend at all times, Our product have therefore adopted the following principles with our business and is committed to Total Quality Management.

Setting quality goals from a customer's viewpoint, understanding the condition of achievement and reviewing the appropriateness and adequateness of the goals. To fully understand and clearly define our customer's requirements in order to consistently meet or exceed their expectations for product quality and performance. Foster a team approach to defect prevention and problem solving. Receive raw materials and outside processed parts only and when accompanied by appropriate certifications and inspection documentation.

To involve all our staff, fully utilizing their skills and expertise in developing our working practices. Timely delivery of products and services to meet our customer's require-ments. To create an environment for continuous improvement in the quality of our services & safety standards and making consistent improvements of its effectiveness.

To provide products and services of such quality that our customers will remain our customers and potential customers will join them.



OUR PROFILE

True Line International LLC is one of the leading Fabricator in Sultanate of Oman. Since our inception, we have been serving the needs of general contractors, architects, and developers on their commercial building projects. Our full range of services includes design and cutting edge fabrication techniques to installation and maintenance which makes us the most comprehensive fabricator available.

Among our many accomplishments, we pride ourselves on the diversity and experience of our team members. Our team demonstrates a profound desire and spirit in creating a well defined strategy for every project by means of exceptional attention to detail. This strategy allows us to exceed our customer's expectations.

At True Line International LLC, our commitment to provide customers with the most cost-efficient designs, the highest level of performance and service, and a superior end product have kept us ahead in an industry where the edge lies in the ability to get clients the results they want-every time.



OUR STRATEGY

OUR STRENGTH

We have highest capacity to cope up the biggest works with regards to Aluminium , stain-less steel, Mild Steel, glass works,UPVC and Gypsum works. Hence, we are equipped with latest, advanced and complete set of fabrication machines which is operated under the supervision of highly professional engineers, draughtsman, designers, and technicians who belong to a mix of different nationalities with a considerable vast experiences and they are ready to take on the future and tackle with ever increasing complexities of the their jobs.

OUR STRATEGY



COMPANY PHILOSOPHY

We operate on trust and build long lasting relationship with our clients. Ensure cost effective services to customers with high quality products, at its scheduled completion. We tell our clients; "if you are happy with our services please tell others, otherwise tell us". We are at your services to make you happy, progressive and worth mentioning our name to others, whoever is in need of it. Our objective is to serve our client with a salute and smile.

OUR TEAM

Our team of proficient tradesmen and estimator provide the expertise to carry out projects of all sizes & styles. This ensures that our staff is fully aware and knowledgeable on different types of aluminum sections and glass types, fittings available in the market & utilize the right one for each occasion. We specialized in Aluminium Windows & Doors, curtain wall, structural glazing, frame less glass jobs, shower doors, double glazed glass, mirrors, designer glass, Sky Lights, Spider Glasses,UPVC & aluminium composite sheet metal work (Cladding) and Miled steel and Stainless Steel.

SL.	ITEM DESCRIPTION
1	DOUBLE HEAD CUT OFF MACHINE - UNICAP 4-550M
2	HYDROLIC CORNER CRIMPNG MACHINE - VECTRA
3	CUT OFF MACHINE - TMS450G
4	CUT OFF MACHINE - TNS350
5	MANUAL COPY ROTER WITH SINGLE HEAD - BOSS
6	END MILLING MACHINE - LIBRA M-SA7
7	32 mm BENCH DRILL - ZQ 4132
8	AIR COMPRESSOR - GS600 /500 /35PF/T
9	GLASS CUTTING TABLE 23MM X 3500MM
10	WELDING MACHINE

LIST OF PROJECTS

SL NO.	PROJECT NAME	CLIENT/CONSULTANT/ CONTRACTOR	SCOPE	STATUS
01	Carrefour Building, Alkhudh	Mr. Adhil Shanfari	Curtain Wall & MS Work.	Completed
02	Construction of Residential Building at Mobila	Mr.Sadar Abdulla	SS Works	Completed
03	Construction of Residence Villa at Al Mahaj at Al Amerat"	ASS Construction LLC	Aluminium Doors and Windows	Completed
04	Transfer Station Project at Al Ashkara	ASS Construction LLC	MS Cage Ladder and MS Ladders	Completed
05	Commercial Complex at Bousher	Oman Prospectus	MS Works	Completed
06	Commercial & Residential Building at Ghala	Mr. Ahmmed Al Izai	SS and Glazing Works	Completed
07	Bhhwan Gym Bulding at Mabelah	Mr. Sulaiman Al Harasi	Glazing Works & Aluminium Doors	Completed
08	Transfer Station Project at Jahlan Buwali	ASS Construction LLC	MS Cage Ladder and MS Ladders	Completed
09	Construction Commercial Residential building at Amrath	Commitment Construction	Aluminium & MS Stair case works	Completed
10	Villa Project at Al Khuwair	Oman Prospectus	MS Gate & SS Works	Completed
11	Transfer Station Project at Al kamel	Atlas Modern Engineering LLC	MS Cage Ladder and MS Ladders	Completed
12	Construction of of Twin Residence Villa at Al Nadha	Mr.Abdullah hamoud	Aluminium Doors and Windows	Completed
13	Construction of Reasidence Villa at Al Bousher	Mr. Abdulla Al Abri	Aluminium Doors and Windows	Completed
14	Construction of Industrial building Project at Al Ansab	Bright Silver Stone	MS Structural works	Completed
15	Commercial Shop Building at Nizwa	Amna Business Activites	Glazing Works	Ongoing
16	3 Star Hotel Project at Ghubrah	Commitment Construction	Structural Glazing and Aluminium	Ongoing
17	ROP Police Station at Izki	ROP/Reliable International LLC	ACP Cladding Works	Ongoing
18	ROP Police Station at Nizwa	ROP/Reliable International LLC	ACP Cladding Works	Ongoing
19	3 star Hotel Project at Alkhuwair	Oman Prospectus	Glazing Works & SS Handrail	Ongoing

Our Brands

Aluminium:



Glass:



Accessories:



Automatic Door Machines :



Weather Sealant:





الخط الحقيقي الدولي ش م م
TRUE LINE
INTERNATIONAL LLC

P.O. Box: 1418, P.C: 131, Sultanate of Oman, Mob : +968 95883349, 97576630, 93143182, Phone : 24030202
Email : sales@truelineint.com, Web : www.truelineint.com

شركة الخط الحقيقي الدولي
م.م. ش.م.م. عمان